

# STUDENT EMPLOYMENT OFFICE

Monthly Newsletter



Photo by Barbara L. Nicoletti

## FEATURED JOBS

### Administrative Assistant

Harvard Humanitarian  
Initiative



### Teacher Assistant, Infant/toddler Teacher

Bear Cub Mandarin  
Immersion Preschool

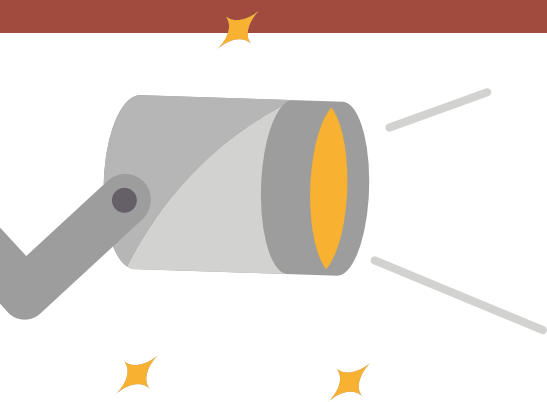
### Usher

American Repertory Theater

### Research Ass't, Life of Afghan Women/Girls under the Taliban

Radcliffe Fellowship Program

### QE automation for DevOps Engineering Digital.ai



**OUR NEXT  
STUDENT WORKER  
SPOTLIGHT COULD  
BE YOU!**

**Here's the survey.**

## STUDENT WORKER SPOTLIGHT

# MEET KATHARINE WRIGHT

Harvard Chan School of Public Health &  
Research Intern at Tigerlily Foundation

### What are your personal keys to success and what challenges have you faced?

Something that's helped me is budgeting more time for things than I expect they'll take. It's easy to be overly ambitious with your calendar and to-do lists, but the reality is that we often depend on other people to stick to our timelines anyway, and allowing your timeline some breathing room pays off majorly!



### How did you find your position?

I became familiar with Tigerlily during my work in medical education, and when I was searching for a summer practicum project, I emailed them to see if they would be willing to take on a summer intern while I completed my applied learning project.

### How have you balanced your school and work responsibilities?

Balance can be difficult, but something that's helped me a lot is blocking large chunks of time on my calendar to realistically see what I do and don't have time for. It can be hard declining more activities, but I've learned it's better to be honest with yourself and others than over-commit.

### Describe your typical day at work:

My work at Tigerlily currently involves doing research and collecting data on breast cancer disparities, especially for young women of color. I am facilitating qualitative data on patient experiences, researching policy related to health equity in breast cancer, and constantly learning more about the social determinants of health. There's so much to learn that connecting the dots can be overwhelming, but it's fascinating to see how everything intersects.

## STUDENT WORKER SPOTLIGHT

# MEET KATHARINE WRIGHT

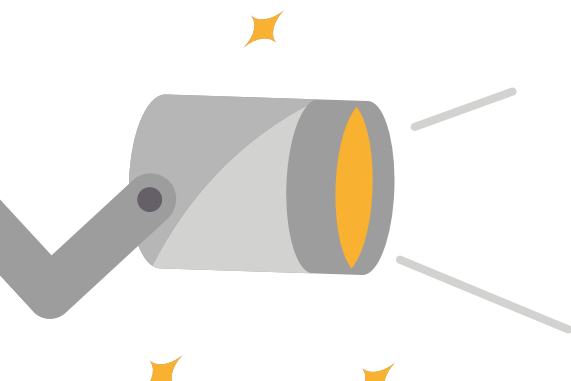
Harvard Chan School of Public Health &  
Research Intern at Tigerlily Foundation

### How does it relate to what you are learning at Harvard?

Studying health & social behavior at the School of Public Health involves a lot of discussion around the social determinants of health. It is really important to understand how so many aspects of life impact health outcomes, but it's even more important to find viable solutions to the disparities we know exist between races, ages, genders, and socioeconomic statuses. What I've learned about breast cancer care, although it has unique challenges, is like a microcosm for the health system as a whole and hopefully can be widely applied to other efforts toward health equity.

### What made you apply?

I have admired the work of patient advocates for a long time, and felt strongly that was the direction I wanted to move my career toward as I applied to MPH programs. The MPH practicum presented a great opportunity for me to get more involved in patient advocacy and experience a different type of industry and organization.



**OUR NEXT  
STUDENT WORKER  
SPOTLIGHT...**

**COULD BE YOU!**

**[Here's the survey.](#)**